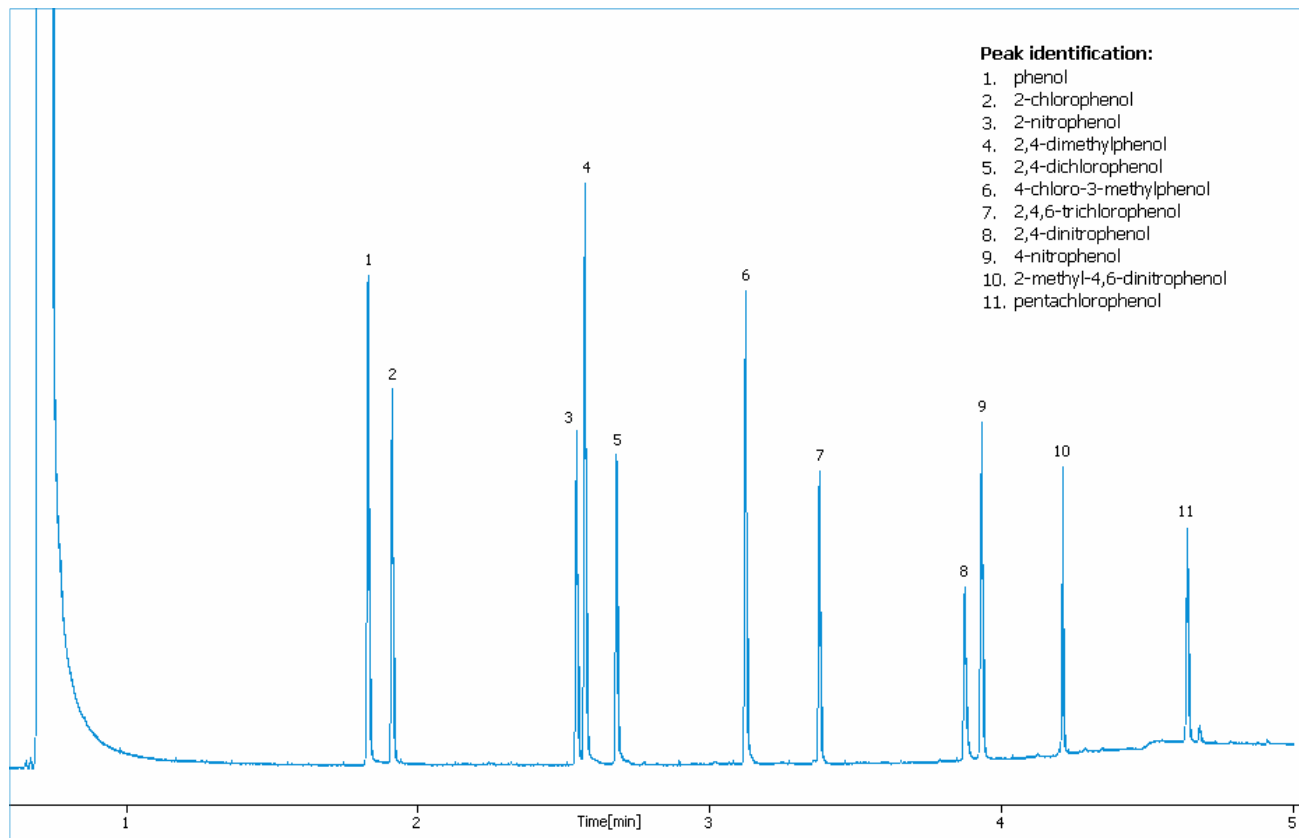


Fast GC application: phenols



Instrument parameters

Oven: 80°C, 1min, 40°C/min, 220°C, 0.5min
Inj: PTV 80°C, 999°C/min, 400°C
Det: FID 400°
Carrier: H₂ 0.5mL/min
Split flow: 25mL/min, split ratio 1:50
Column: DN-WAX FAST 15m, 0.10mm, 0.10µm

Sample: 200ppm
Volume injected: 0.5µL

Compounds	Std dev.
Phenol	0,0013
2-chlorophenol	0,0013
2-nitrophenol	0,0016
2,4-dimethylphenol	0,0015
2,4-dichlorophenol	0,0013
4-chloro-3-methylphenol	0,0012
2,4,6-trichlorophenol	0,0012
2,4-dinitrophenol	0,0016
4-nitrophenol	0,0010
2-methyl-4-dinitrophenol	0,0013
pentachlorophenol	0,0015

Retention time standard deviation

